

Figure 1. TOTAL VOTES.

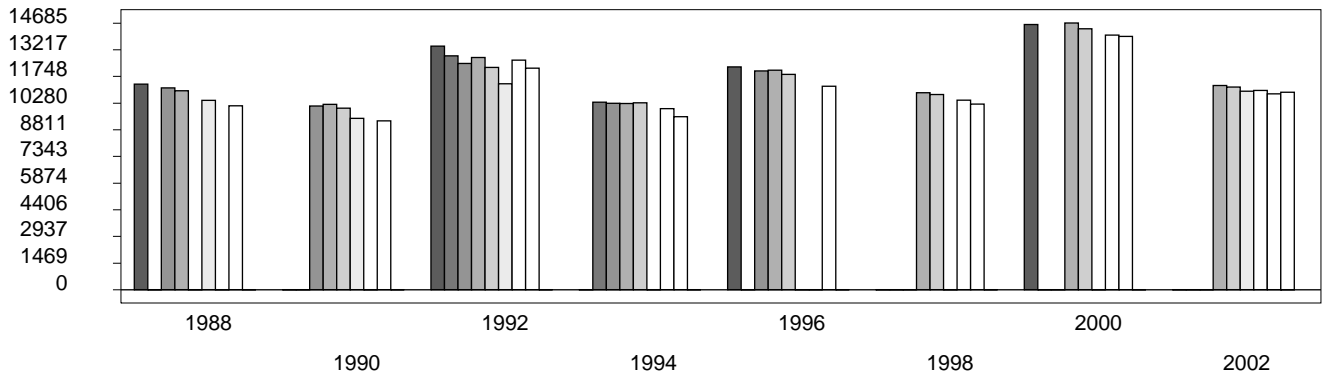


Figure 2. REPUBLICAN %. Refer to GOP-DEX for comparative value.

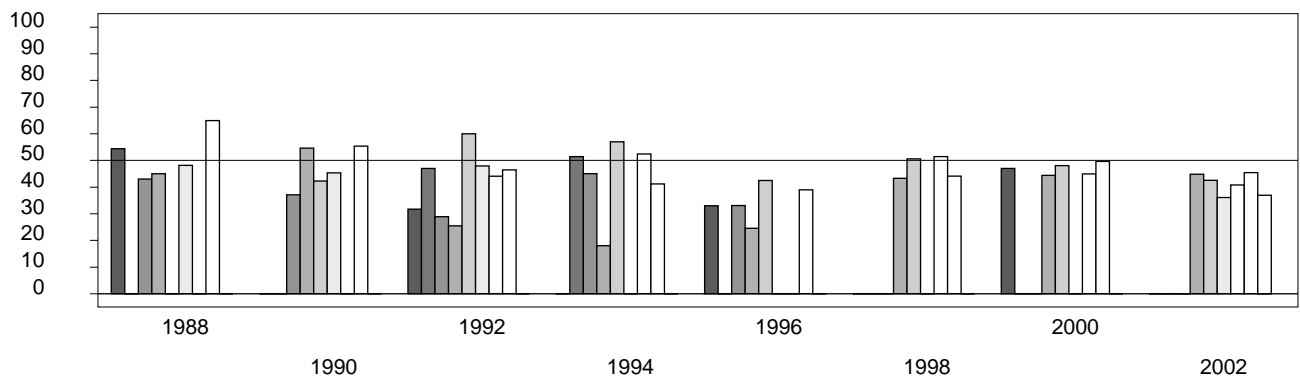
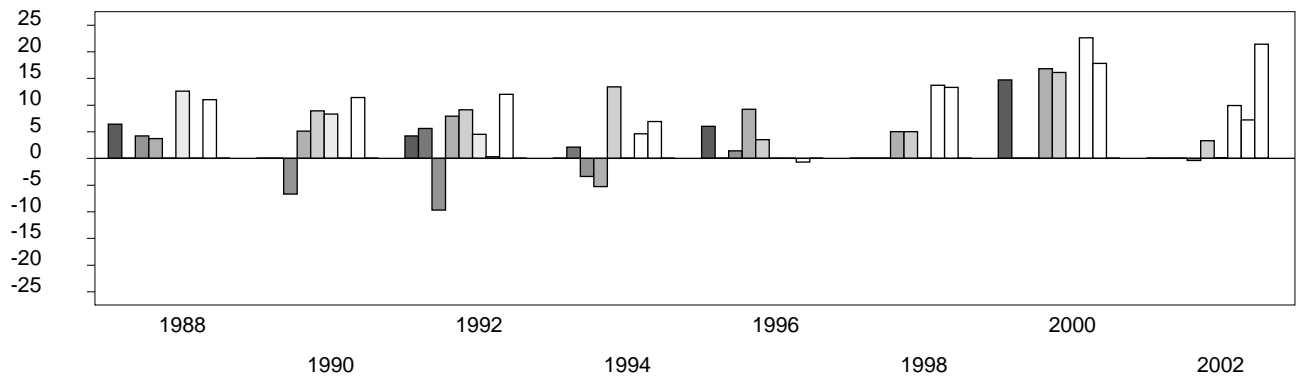


Figure 3. R-DEX: % by which County GOP% is above/below the State GOP%.



POLIDATA © Demographic and Political Guides. All Rights Reserved. Copyright © 2003. www.polidata.us

1. Winner in UPPERCASE. Incumbency: * for incumbent, + for party holding seat.
 2. BOLDING indicates unit won by REPUBLICANS. Plurality in UPPERCASE indicates party which won unit won with a majority of the vote.
 3. Total column may include votes for minor party candidates. An asterisk (*) follows the Total column if it includes votes not listed (see Rem%).
 4. % of Marg(in) is Plurality as % of Total Vote. GOP Index (R-Dex) is the percentage (not percentage points) by which GOP% for County is above(+)/below(-) the State GOP%.
 5. Order of races is standardized and may not match ballot order. Selected races only; non-competitive lower-ticket races may be omitted.
 6. Each race is assigned a specific bar in the graphs. Top of the ticket is darkest bar and is at the left of each year cluster. Races not listed in the history table will result in blank bars.
- [50017VHA-psvhcy21-CB24]