

Race	Candidate GOP/Dem/Ind	GOP Vote	Dem Vote	Ind Vote	Total Vote	GOP %	Dem %	Ind %	Rem %	Plurality/Win	%of Marg	GOP Index
2000												
Pres	BUSH/Gore+	336,475	295,497	0	648,123*	51.9	45.6	0.0	2.5	40,978 R	6.3	0.0
1996												
Pres	Dole/CLINTON*/Perot	233,946	327,812	71,639	636,459*	36.8	51.5	11.3	0.5	93,866 D	14.8	0.0
1992												
Pres	Bush/CLINTON+/Perot	241,974	331,001	108,829	683,762*	35.4	48.4	15.9	0.3	89,027 d	13.0	0.0
1988												
Pres	Bush+/DUKAKIS	310,065	341,016	0	653,311*	47.5	52.2	0.0	0.3	30,951 D	4.7	0.0
1984												
Pres	REAGAN/Mondale+	405,483	328,125	0	735,742*	55.1	44.6	0.0	0.3	77,358 R	10.5	0.0
1980												
Pres	Reagan/CARTER*	334,206	367,462	31,691	737,715*	45.3	49.8	4.3	0.6	33,256 d	4.5	0.0
1976												
Pres	Ford+/CARTER	314,760	435,914	0	750,964*	41.9	58.1	0.0	0.0	121,154 D	16.1	0.0
1972												
Pres	NIXON/McGovern+	484,964	277,435	0	762,399	63.6	36.4	0.0	0.0	207,529 R	27.2	0.0
1968												
Pres	Nixon/HUMPHREY+/Wallace	307,555	374,091	72,560	754,206	40.8	49.6	9.6	0.0	66,536 d	8.8	0.0
1964												
Pres	Goldwater/JOHNSON+	253,953	538,087	0	792,040	32.1	67.9	0.0	0.0	284,134 D	35.9	0.0
1960												
Pres	Nixon+/KENNEDY	395,995	441,786	0	837,781	47.3	52.7	0.0	0.0	45,791 D	5.5	0.0
1956												
Pres	EISENHOWER/Stevenson*	449,297	381,534	0	830,831	54.1	45.9	0.0	0.0	67,763 R	8.2	0.0
1952												
Pres	Eisenhower/STEVENSON+	419,970	453,578	0	873,548	48.1	51.9	0.0	0.0	33,608 D	3.8	0.0
1948												
Pres	Dewey/TRUMAN+	316,251	429,188	0	748,750*	42.2	57.3	0.0	0.4	112,937 D	15.1	0.0
1944												
Pres	Dewey/ROOSEVELT*	322,819	392,777	0	715,596	45.1	54.9	0.0	0.0	69,958 D	9.8	0.0
1940												
Pres	Willkie/ROOSEVELT*	372,414	495,662	0	868,076	42.9	57.1	0.0	0.0	123,248 D	14.2	0.0
1936												
Pres	Landon/ROOSEVELT*	325,358	502,582	0	829,945*	39.2	60.6	0.0	0.2	177,224 D	21.4	0.0
1932												
Pres	Hoover*/ROOSEVELT	330,731	405,124	0	743,774*	44.5	54.5	0.0	1.1	74,393 D	10.0	0.0
1928												
Pres	HOOVER+/Smith	375,551	263,784	0	642,752*	58.4	41.0	0.0	0.5	111,767 R	17.4	0.0
1924												
Pres	COOLIDGE+/Davis/LaFollet	288,635	257,232	37,795	583,662	49.5	44.1	6.5	0.0	31,403 r	5.4	0.0
1920												
Pres	HARDING+/Cox	282,007	220,785	0	509,936*	55.3	43.3	0.0	1.4	61,222 R	12.0	0.0

Figure 1. TOTAL VOTES.

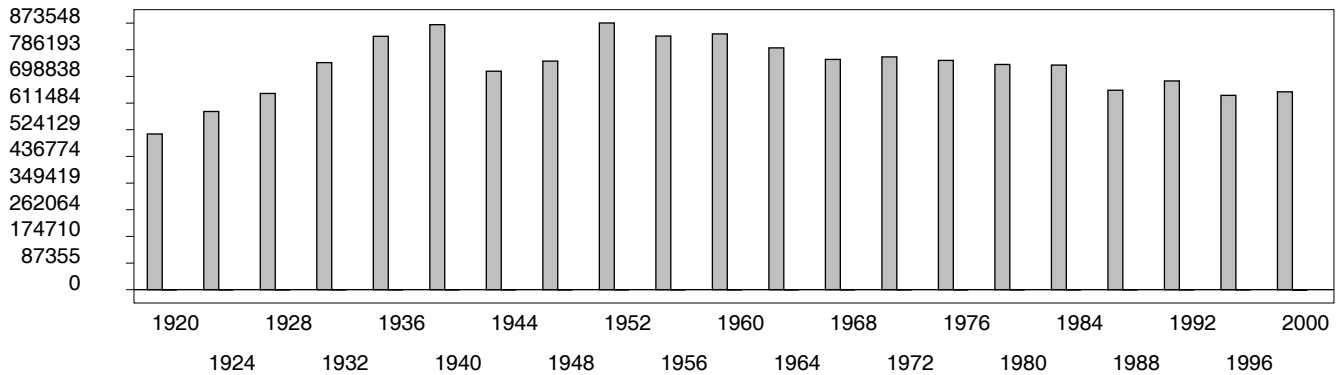


Figure 2. REPUBLICAN %. Refer to GOP-DEX for comparative value.

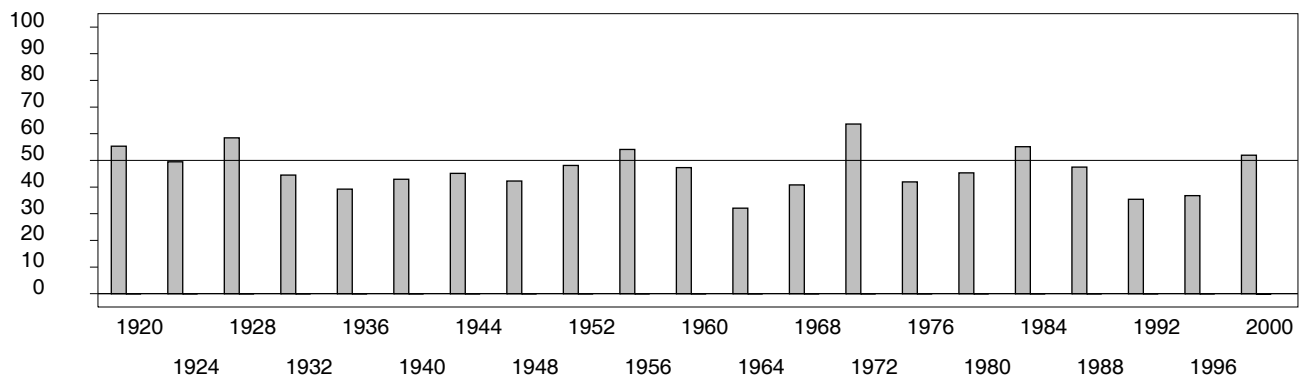


Figure 3. R-DEX: % by which County GOP% is above/below the State GOP%.

