

Race	Candidate GOP/Dem/Ind	GOP Vote	Dem Vote	Ind Vote	Total Vote	GOP %	Dem %	Ind %	Rem %	Plurality/Win	%of Marg	GOP Index
2002												
Cong	CUBIN*/Akin	110,229	65,961	0	182,152*	60.5	36.2	0.0	3.3	44,268 R	24.3	0.0
Gov	Bebout+/FREUDENTHAL	88,873	92,662	0	185,459*	47.9	50.0	0.0	2.1	3,789 d	2.0	0.0
Educ	BLANKENSHIP+/Emmons	95,672	84,056	0	179,728	53.2	46.8	0.0	0.0	11,616 R	6.5	0.0
2000												
Pres	BUSH+/Gore	147,947	60,481	0	213,726*	69.2	28.3	0.0	2.5	87,466 R	40.9	0.0
1998												
Cong	CUBIN*/Farris	100,687	67,399	0	174,219*	57.8	38.7	0.0	3.5	33,288 R	19.1	0.0
Gov	GERINGER*/Vinich	97,235	70,754	0	174,888*	55.6	40.5	0.0	3.9	26,481 R	15.1	0.0
Sec	MEYER+/Mockler	102,145	67,511	0	169,656	60.2	39.8	0.0	0.0	34,634 R	20.4	0.0
Educ	CATCHPOLE*/Lane	98,289	73,393	0	171,682	57.3	42.8	0.0	0.0	24,896 R	14.5	0.0
1996												
Pres	DOLE+/Clinton/Perot	105,388	77,934	25,928	211,571*	49.8	36.8	12.3	1.1	27,454 r	13.0	0.0
Sen	ENZI+/Karpan	114,116	89,103	0	211,077*	54.1	42.2	0.0	3.7	25,013 R	11.9	0.0
Cong	CUBIN*/Maxfield	116,004	85,724	0	209,983*	55.2	40.8	0.0	3.9	30,280 R	14.4	0.0
1994												
Sen	THOMAS+/Sullivan	118,754	79,287	0	201,710*	58.9	39.3	0.0	1.8	39,467 R	19.6	0.0
Cong	CUBIN+/Schuster/Dawson	104,426	81,022	10,749	196,197	53.2	41.3	5.5	0.0	23,404 R	11.9	0.0
Gov	GERINGER/Karpan+	118,016	80,747	0	200,990*	58.7	40.2	0.0	1.1	37,269 R	18.6	0.0
Educ	CATCHPOLE+/Minier	112,608	82,599	0	195,207	57.7	42.3	0.0	0.0	30,009 R	15.4	0.0
1992												
Pres	BUSH*/Clinton/Perot	79,347	68,160	51,263	200,598*	39.6	34.0	25.6	0.9	11,187 r	5.6	0.0
Cong	THOMAS*/Herschler	113,882	77,418	0	196,977*	57.8	39.3	0.0	2.9	36,464 R	18.5	0.0
1990												
Sen	SIMPSON*/Helling	100,784	56,848	0	157,632	63.9	36.1	0.0	0.0	43,936 R	27.9	0.0
Cong	THOMAS+/Maxfield	87,078	70,977	0	158,055	55.1	44.9	0.0	0.0	16,101 R	10.2	0.0
Gov	Mead/SULLIVAN*	55,471	104,638	0	160,109	34.7	65.4	0.0	0.0	49,167 D	30.7	0.0
Sec	Zollinger/KARPAN*	55,948	100,729	0	156,677	35.7	64.3	0.0	0.0	44,781 D	28.6	0.0
Aud	FERRARI+/Carroll	91,811	58,655	0	150,466	61.0	39.0	0.0	0.0	33,156 R	22.0	0.0
Educ	OHMAN/Simons*	91,223	66,319	0	157,542	57.9	42.1	0.0	0.0	24,904 R	15.8	0.0
1988												
Pres	BUSH+/Dukakis	106,867	67,113	0	176,551*	60.5	38.0	0.0	1.5	39,754 R	22.5	0.0
Sen	WALLOP*/Vinich	91,143	89,821	0	180,964	50.4	49.6	0.0	0.0	1,322 R	0.7	0.0
1986												
Gov	Simpson/SULLIVAN+	75,841	88,879	0	164,720	46.0	54.0	0.0	0.0	13,038 D	7.9	0.0
Sec	Thomson+/KARPAN	74,880	86,449	0	161,329	46.4	53.6	0.0	0.0	11,569 D	7.2	0.0
Aud	SIDI+/Tucker	86,384	69,819	0	156,203	55.3	44.7	0.0	0.0	16,565 R	10.6	0.0
Trs	SMITH*/Orrison	98,502	60,870	0	159,372	61.8	38.2	0.0	0.0	37,632 R	23.6	0.0
Educ	Meredith/SIMONS*	68,960	90,978	0	159,938	43.1	56.9	0.0	0.0	22,018 D	13.8	0.0
1984												
Pres	REAGAN*/Mondale	133,241	53,370	0	188,968*	70.5	28.2	0.0	1.3	79,871 R	42.3	0.0
1982												
Sen	WALLOP*/McDaniel	94,725	72,466	0	167,191	56.7	43.3	0.0	0.0	22,259 R	13.3	0.0
Gov	Morton/HERSCHLER*	62,128	106,427	0	168,555	36.9	63.1	0.0	0.0	44,299 D	26.3	0.0
Sec	THOMSON*/Petersen	88,808	76,559	0	165,367	53.7	46.3	0.0	0.0	12,249 R	7.4	0.0
Trs	SMITH+/Engstrom	92,743	65,631	0	158,374	58.6	41.4	0.0	0.0	27,112 R	17.1	0.0
Educ	Elliott/SIMONS	69,699	92,270	0	161,969	43.0	57.0	0.0	0.0	22,571 D	13.9	0.0

Figure 1. TOTAL VOTES.

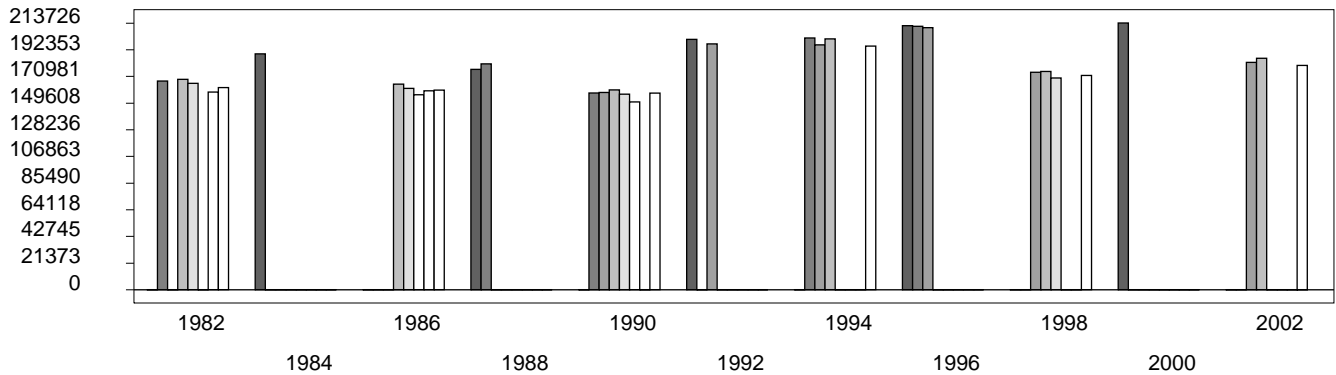


Figure 2. REPUBLICAN %. Refer to GOP-DEX for comparative value.

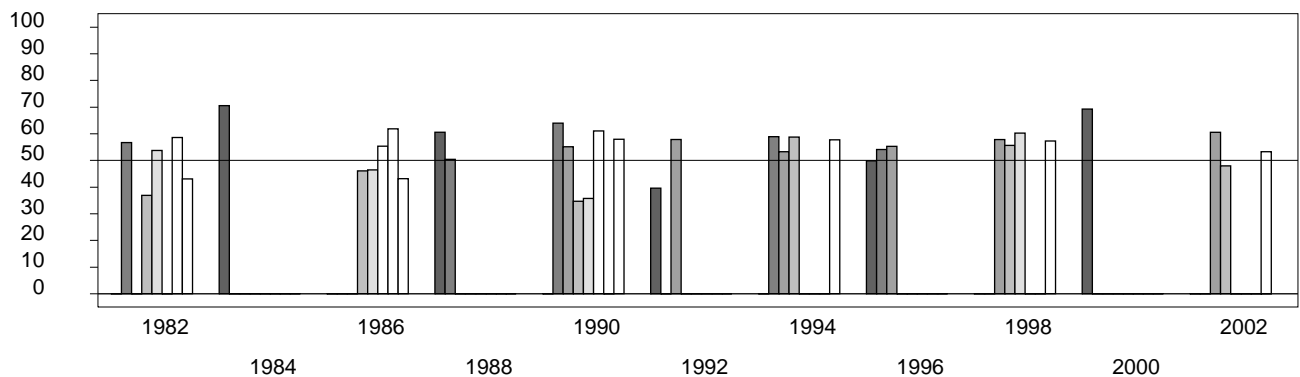


Figure 3. R-DEX: % by which County GOP% is above/below the State GOP%.

